

# 索引

## Index

- 02/14**  
02  
**KTC® 外墙板系列**  
-KTC外墙板系列
- 15/18**  
15  
18  
**Malex® 清水板系列**  
-Malex® 预涂清水板  
-Malex® 预制清水板
- 19/21**  
**雪岩® 板系列**
- 22/26**  
22  
**美岩® 水泥板**  
-美岩板
- 27/29**  
**美岩® 秀土板**
- 30/35**  
30  
34  
**VIVA® 木丝板**  
-木丝平板 (原色/浅灰/黑色)  
-木丝木纹板/木丝水波纹板
- 36**  
**TOTAL® 手工木纹板**
- 37**  
37  
**辅料**  
-保护剂/结构胶
- 38**  
**施工指导**

# KTC<sup>®</sup> 外墙板系列

KTC外墙板是一种集外围护、外保温、外装饰为一体的新型可装配式外墙系统，以不含石棉等对人体有害物质的水泥、植物纤维等为原料经过行业独有真空及空心挤出成型工艺，经过完善的材质稳定性双阶段蒸压养护、涂装、包装等工序加工而成。KTC外墙板已通过多项国家级检测，如：抗风压、抗震等。并由国家建筑标准设计研究院编写了国家标准专项图集。

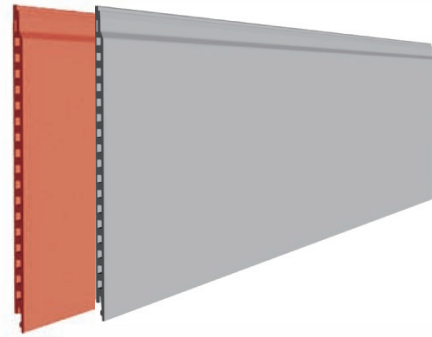
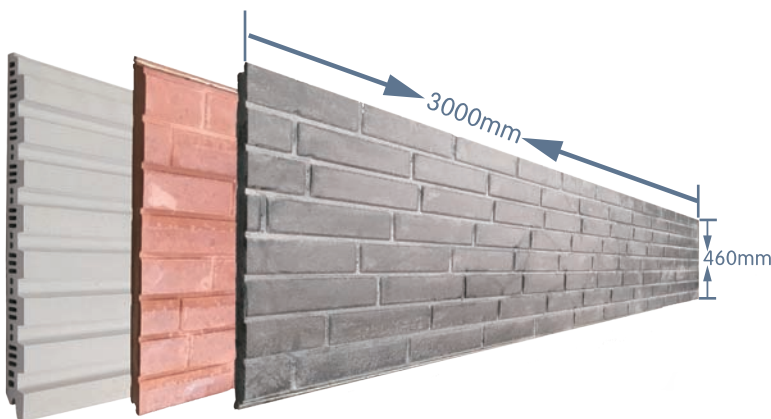
KTC Fiber Cement Siding Board is a new kind of low-carbon cladding material with 3 functions: cladding, insulation and decoration. It is made from cement and plant fiber without asbestos. It is produced by vacuum and hollow extrusion molding process which is unique, well finished by double stages autoclaved curing, coating and packing process.

## 应用范围

### Applications:

商业、餐饮、院校、各类展馆等。  
Business building, catering, academy, pavilion, ect.

## 样板照片



样板照片

## 产品特点

### Product Features

质量稳定性  
绿色环保,无放射性  
隔声隔热防火  
层间位移  
安装方便  
轻质高强

Stable quality  
Green, No radioactivity  
Sound and Thermal Insulation & Fire Proof  
Flexible connections  
Fast construction  
Light and strong

## 规格尺寸

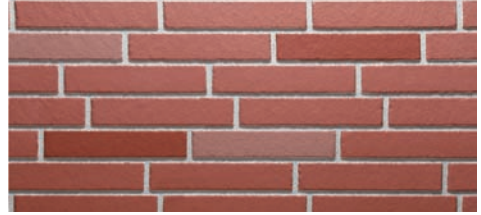
### Specification

空心板: 3000\*300\*15mm (平板)  
3000\*450\*18mm (平板)  
3000\*600\*26mm (平板/条纹)  
实心板: 3000\*460\*16mm (平板/花纹)

样板照片



S-7



S-7



S-7



S-10



S-13



S-14



S-16



S-18



S-19



K 26-OLC



新品 木纹板



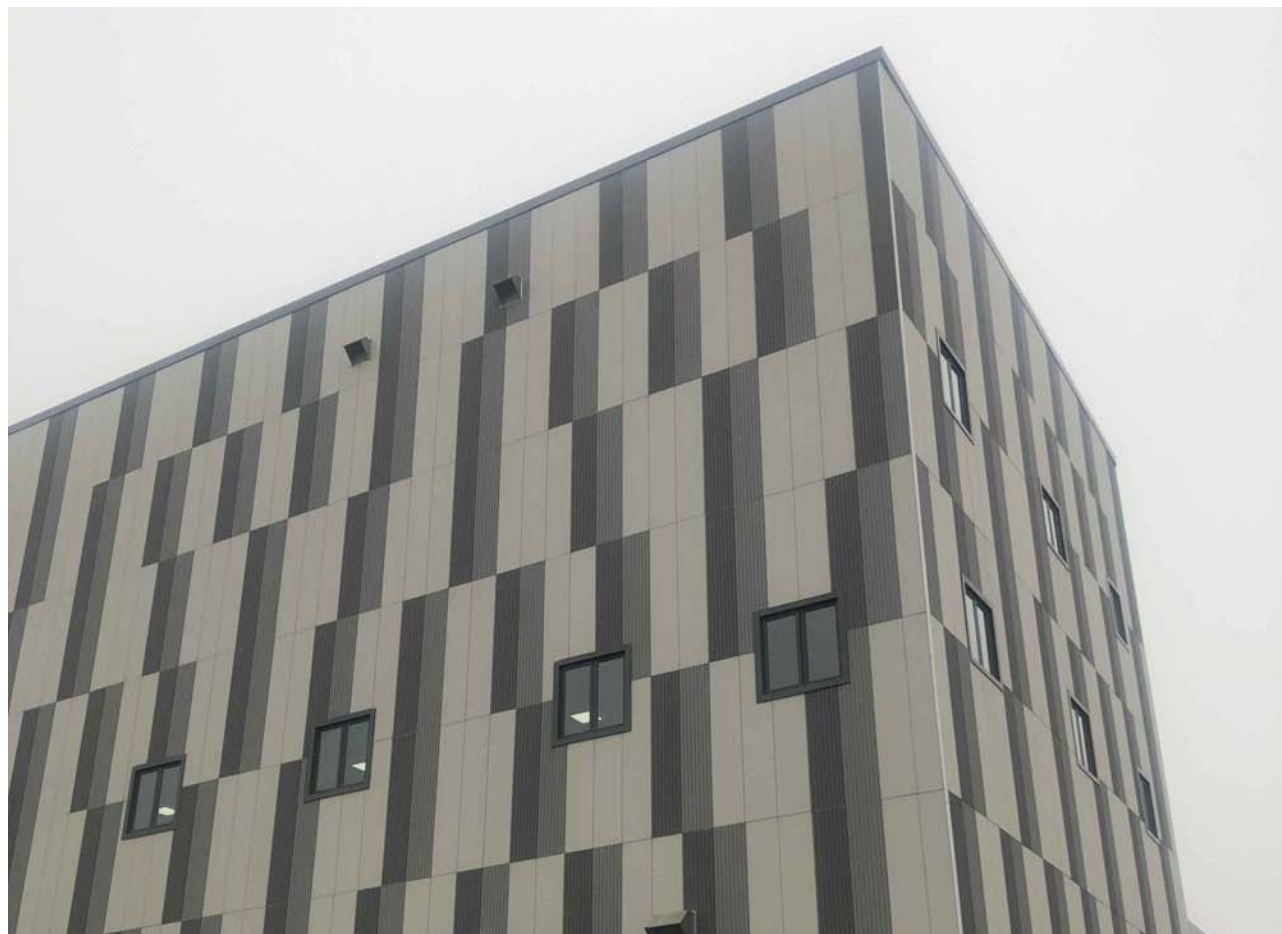
新品 夯土板



重庆江北嘴小学项目  
Chongqing Jiangbeizui Primary School



苏州工业园区  
Suzhou Industrial Park





飞凯材料, 上海  
Phichem, Shanghai



深圳翠园中学  
Shenzhen Cuiyuan Middle School



国家核电大楼，上海  
State Nuclear Power Building, Shanghai



南京大学仙林校区  
Xianlin Campus of Nanjing University

性能技术指标:  
Performance

序号 No.	检验项目 Item	检测依据 Test standard	标 Stan	检验值 Test result	
				K系列 K series	S系列 S series
1	弯曲破坏荷载 (N) Flexural load(N)	JC/T 2085-2011	K系列≥1100N, S系列≥785N	1800~3500N	1000~1300N
2	耐冲击性 (mm) Impact resistance (mm)	JC/T 2085-2011	无贯通龟裂 No map crack	无 No map crack	
	耐透水性 (mm) Impermeability(mm)	JC/T 2085-2011	水面降低<10mm Decline of surface water<10mm	1~2mm	1~3mm
	燃烧性能 Non-combustibility	GB 8624-2006	—————	A1级	A1级
	含水率 (%) Percentage of moisture(%)	JC/T 2085-2011	≤20	4~12 (素板)	6~12 (素板)
	吸水率 (%) Percentage of water absorption(%)	JC/T 2085-2011	素板≤25, 装饰板≤15	5~11 (素板)	5~13 (素板)
	抗冻性 Frost resistance	JC/T 2085-2011	剥离面积<2%, 无层间剥落, 变化率<10% Peel area<2%, no peel between layer, Variable rate of thickness<10%	200次无剥离, 无层间剥落, S系列厚度变化率0.14%, K系列厚度变化率0.09% No peel area, no peel between layer, Variable rate of thickness is 0.14% (0.09%)	
	湿胀率 (%) Length swelling(%)	JC/T 2085-2011	≤0.3	素板≤0.2	素板≤0.2
	无石棉分析 Percentage of asbestos	HBC 19-2005	—————	不含石棉 No asbestos	
	导热系数 { W / ( m · k ) } Thermal conductance coefficient	GB/T 10294-1988	—————	0.1767	0.21
	放射性 Radiactivity	GB 6566-2001	内照射指数 (IRA) ≤1.0 外照射指数 (IRA) ≤1.0	0.1 0.1	

复合墙体性能

Complex wall performance

序号 No.	项目 Item	检测依据 Test standard	检测结果 Test result	检测单位 Test organization
1	隔声性能 Sound insulation performance	GBJ75-84; GB121-88	54dB	中国建筑科学研究院 China Academe of Building Research
2	复合墙体热阻 Complex wall heat resistance	GB/T13475-2008	2.2m <sup>2</sup> ·K/W	
3	耐火极限 Refractoriness	GB/T9978-1999	1.85h	国家固定灭火系统和耐火构件质量监督检验中心 State fixed fire extinguisher system and refractory component quality supervision and inspection center

幕墙检测性能

Performance

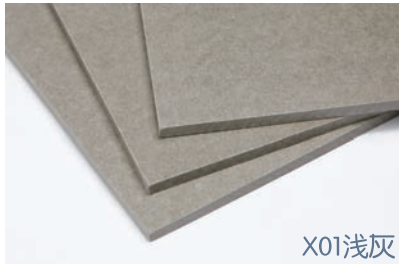
序号 No.	产品代号 Product code	项目 Test Item	检测依据 Test standard	检测结果 Test Result	检测单位 Test organization
1	K20-0LB	气密性能 air permeability performance	GB/T21086-2007	3级	国家建筑材料测试中心 national research center of techniques for building materials
		水密性能 watertightness performance		3级	
		抗风压性能 wind load resistance performance		9级	
2	K26-0LC	气密性能 air permeability performance	GB/T15227-2007	3级	
		水密性能 watertightness performance		3级	
		抗风压性能 wind load resistance performance		7级	



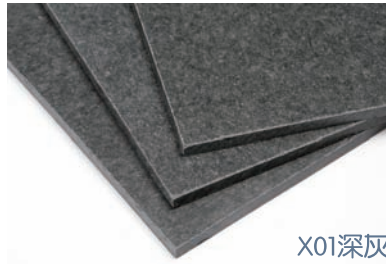
# 雪岩<sup>®</sup>板系列

雪岩<sup>®</sup>板自推出以来广受客户好评，表面色泽独特，自带釉面感，又有细腻如雪花般的纹路；雪岩板绿色环保，室内装饰无需经过表面处理，施工简便，是一款性价比极高的产品。

Forex polished board has been praised by customers since its launch, with a unique surface color, glazed sensibility, and a delicate snow-like texture. The Forex polishing board is environmental, and for the interior decoration it does not need to be surface-treated, installation is simple, and the cost performance is extremely good.



X01浅灰



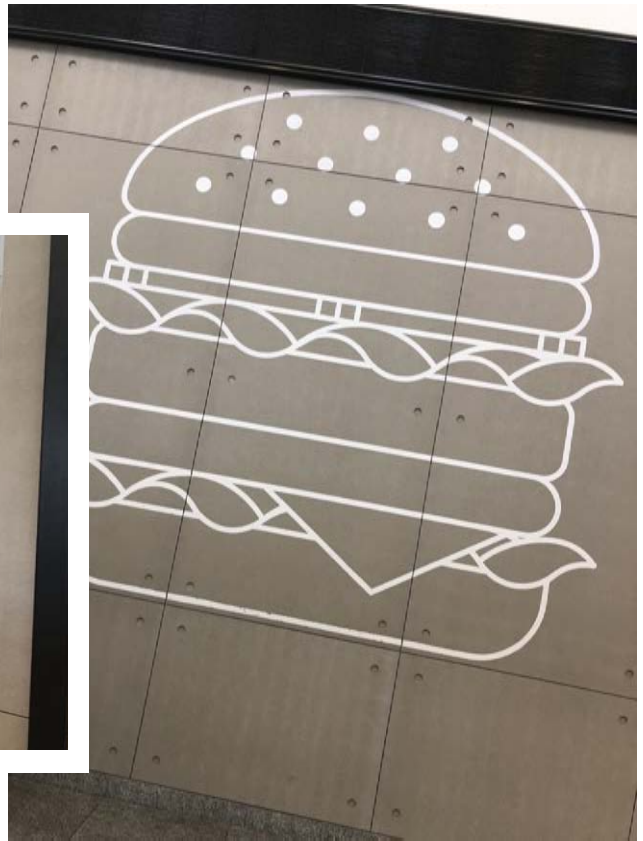
X01深灰

雪岩板

规格尺寸/Specification: 长*宽Length*Width	厚度 Thickness
1220*2440mm	6,8mm

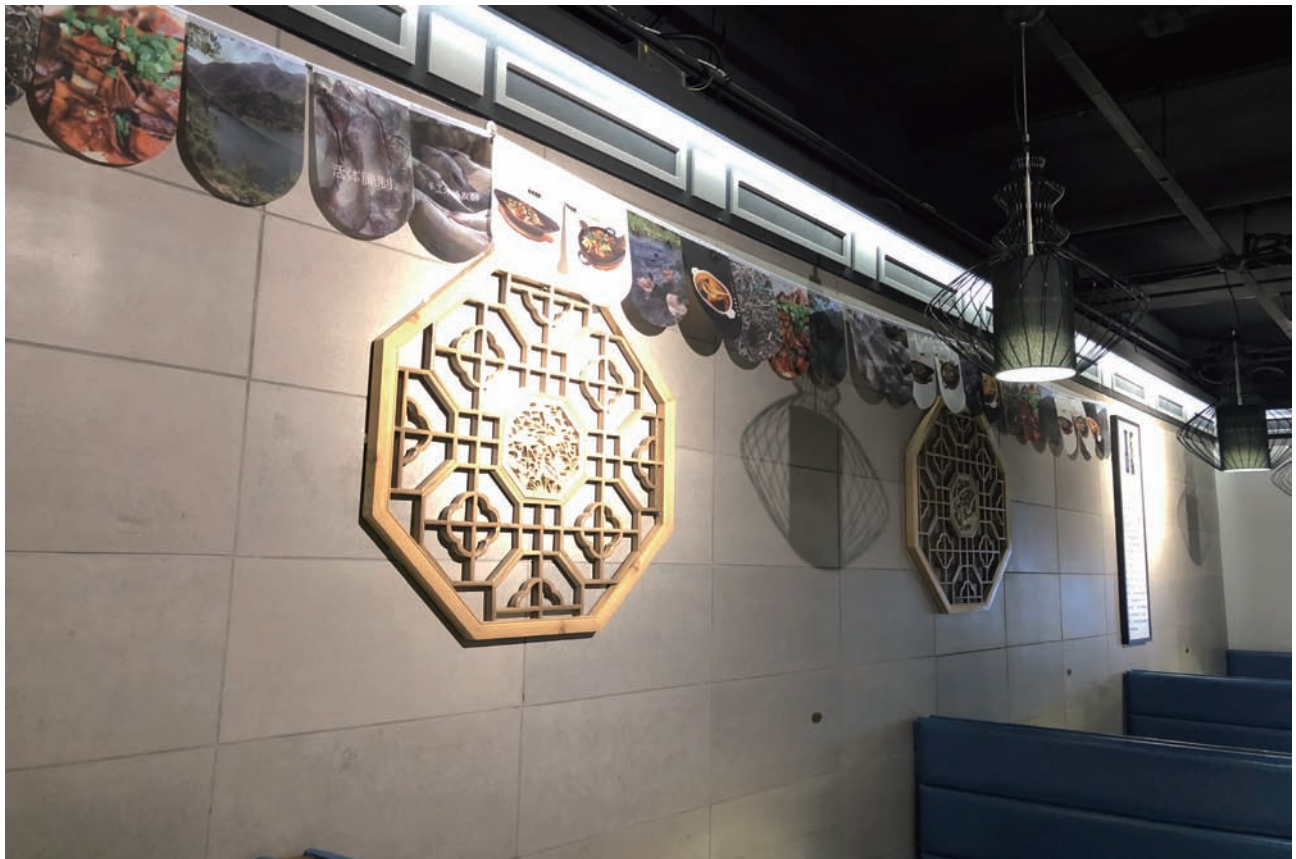


香港机场麦当劳  
Hong Kong Airport McDonald's





广州红砖厂科技园区办公楼  
Office building of Science and Technology Park,  
Guangzhou Brick Factory



# 美岩<sup>®</sup> 水泥板

## — 美岩板

### 产品特点

#### Product Features

美岩板由波特兰水泥和植物纤维构成，A级防火，稳定性强，防水防潮，可任意裁切、穿孔、打磨，并且可以做拉槽、雕刻、凹凸、镂空等各式独特造型。

美岩板色泽自然大方，两面纹理不同，粗面纹路具有立体美感、细面纹路质感细腻平滑，是设计师创作的完美素材。

Principal component is Portland concrete and plant fibre, It is A-level fire resistance, durable, water resistance, easy of free cutting, perforation, grinding, also can do engraving, embossing, and other kinds of unique shape easily.

Positive and negative side with different patterns, rough surface is dimensional, fine surface Texture is very delicate, It is perfect material for architects to realize their creative idea.

### 应用范围

#### Applications:

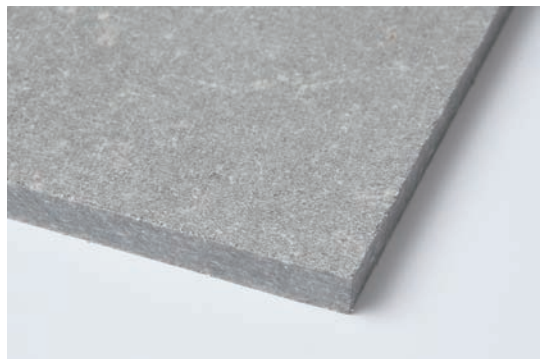
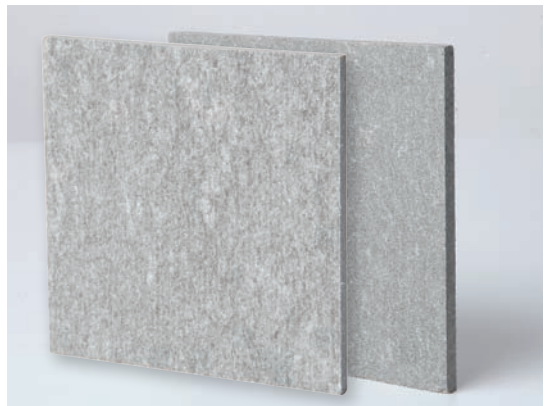
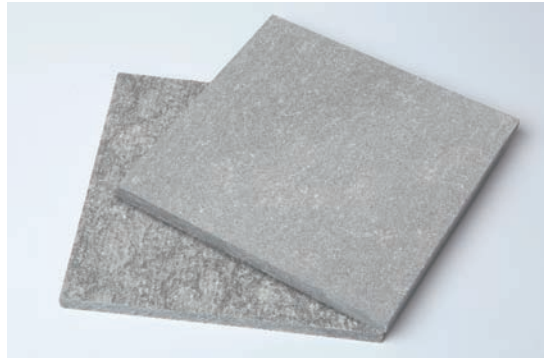
室外: 建筑外墙，办公楼，酒店，会所，院校，各类展馆等。  
室内: 装饰用内墙，地面，吊顶，家居道具等。

Outdoor: Exterior walls, office buildings, club, academy, pavillion, etc.

Indoor: Interior decoration, floor, furniture and props, ceiling, etc.

### 技术参数

- 1、密度: 1.7-1.9g/cm<sup>3</sup>
- 2、弹性系数: 3000N/mm<sup>2</sup>
- 3、抗弯强度: 39.7MPa
- 4、抗拉强度: 13.1MPa
- 5、抗冲击强度: 3.4KJ/m<sup>2</sup>
- 6、含水率: 7.1%
- 7、湿胀率: 0.23%
- 8、干缩率: 0.11%
- 9、透水性: 不透水
- 10、防火等级: A1



规格尺寸/Specification: 长*宽 Length*Width	厚度 Thickness	
	外墙应用 External Application	内墙应用 Internal Application
1220*2440mm	10,12,16mm	4,6,8mm



## 迪士尼项目 Disney Project

项目地点：迪士尼小镇

美岩板的多变的特性造就了它超强的可塑性，  
各种艺术造型在设计师的手中应运而生  
The deformability of meiyang board is the perfect  
quality for creative designer, disney land project is  
good example

广州花城汇隧道  
Guangzhou CBD Tunnel



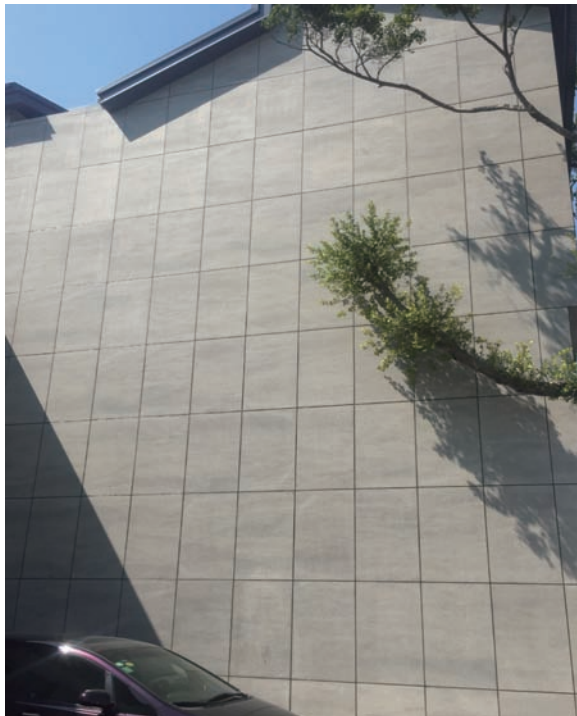


### 磨碟沙公园-美岩板户外应用

meiyan board external application:

美岩板在户外应用表现出超强的耐候性，是公共建筑材料的首选

Meiyan board has the qualification of weather resistance which is suitable for outdoor application of public architecture





### 上海观复博物馆地下宝库

宝库墙体板材多处采用绿活混凝土板，完美的与光滑的不锈钢和红色字体相融合，彰显文化特色的同时防潮防火防虫坚固耐用，性能优越。

This case perfect showed the advanced character of eco-arch fiber cement board—fire and water resistance, sound and heat insulation.





当代美术馆，深圳  
Contemporary museum, Shenzhen



西湖邻里中心  
West lake neighbor center



# 美岩® 夯土板

## —美岩夯土板

作为流行趋势的“夯土”风格再次回归大家的视野里，粗犷原始的砂砾质感让人们仿佛能闻到大地泥土的气息；但是原始夯土以纯生土和夯筑技术为基础，强度低耐久性差，难以广泛应用。

“美岩夯土板”作为创新的夯土效果混凝土板，在保持原始质感和岩土肌理的前提下大胆尝试，在使用性能上完全超越夯土，耐久耐候性强，是符合现代建筑时代性、与时俱进的创新产品。

As the trend of the "rammed earth" style once again return to people's vision, the rough feelings take us back to the nature, back to the earth; but the original ramming technology based on the low intensity of poor durability, it is difficult to be widely used in nowadays.

Our rammed earth style board as an innovative ramming effect concrete product. It is a bold attempt in the use of excellent performance under the premise of completely maintaining the original texture, durable weather resistance is the main feature, it totally meet the modern architecture needs as an innovative products advancing with the times.

### 应用范围

#### Applications:

室外: 建筑外墙, 办公楼, 酒店, 会所, 院校, 各类展馆等。

室内: 装饰用内墙, 地面, 吊顶, 家居道具等。

Outdoor: Exterior walls, office buildings, club, academy, pavillion, etc.

Indoor: Interior decoration, floor, furniture and props, ceiling, etc.



规格尺寸/Specification: 长*宽 Length*Width	厚度 Thickness
1200*2400mm	8,11,16,20mm



# VIVA<sup>®</sup> 木丝板

## - VIVA木丝平板

### 产品特点

#### Product Features

采用特殊工艺将高品质波特兰水泥和矿化后的桉树颗粒混合后高温高压制成，结合了混凝土的耐久性及木材的轻盈、弹性品质，具有隔热、隔音、防火、防潮、防蚁等优秀特性。

表面光滑，文理独特，适于打造清水混凝土的装饰风格，给人以清新隽永的独特美感。

Specially made from high quality portland concrete and planted eucalyptus particles, it combines the durability of concrete and light, elastic quality of wood together, ideally suited for all applications with water and fire resistance, sound and heat insulation.

Positive and negative different patterns, rough surface is dimensional beauty, fine surface texture is very delicate, perfect material for architects to realize their creative idea.

### 应用范围

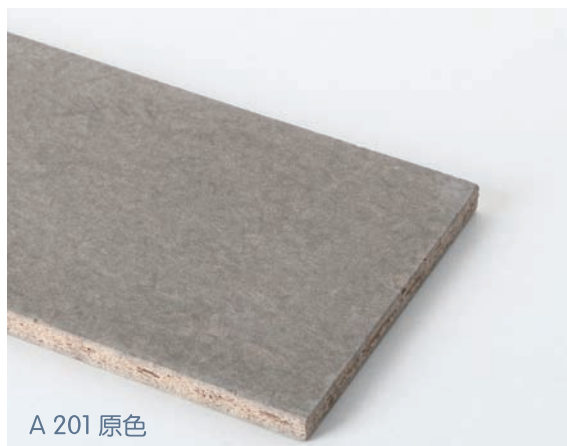
#### Applications:

内外墙、吊顶、地面、商业、办公楼、酒店、展馆、会所、院校等。

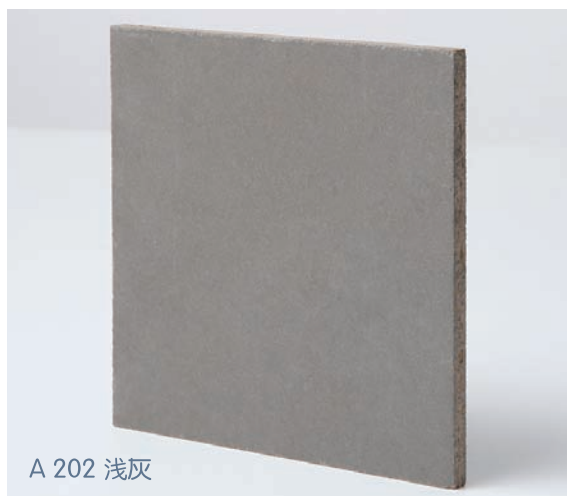
Internal & external wall, ceiling, floor, business building, office building, hotel, pavilion, club, academy, etc.

### 技术参数

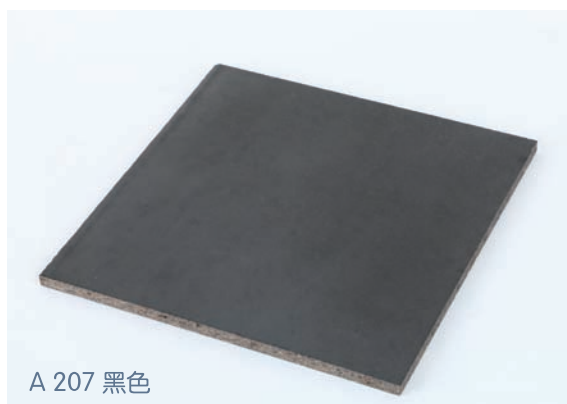
- 1、密度：1.2-1.3g/cm<sup>3</sup>
- 2、弹性系数：3000N/mm<sup>2</sup>
- 3、抗弯强度：9-12Mpa
- 4、抗折强度：13.8Mpa（自然含湿状态）
- 5、抗折强度：9.4Mpa（浸水24hrs）
- 6、含水率：12%
- 7、透水性：不透水
- 8、防火等级：B1
- 9、抗弯破坏载重：87kgf
- 10、抗冲击性能：无龟裂、剥离、贯穿及裂开



A 201 原色



A 202 浅灰



A 207 黑色

规格尺寸/Specification: :

长\*宽 Length\*Width

厚度 Thickness

1220\*2440mm

8,10,12,16,20,25mm



浦东机场2号航站楼,  
Terminal 2, Pudong Airport



创意源于回归自然  
--安东尼 高迪

Originality consists of going back to the origins  
--Antoni Gaudí



# VIVA<sup>®</sup> 木丝板

## - VIVA木丝木纹板 / 水波纹板



VIVA木丝水泥板 木纹/水波纹除了经典的平面木丝水泥板，我们还新推出水波纹和木纹可供选择，装饰性强，可用于墙体、地面、隔栅等。

Wood cement board Wood decor/water wave decor  
In addition to the classic wood cement board, we also provide stone decor and wood decor for you to choose from, it is highly decorative, and can be widely used for walls, floors, grille.



### 技术参数

- 1、密度：1.2-1.3g/cm<sup>3</sup>
- 2、弹性系数：3000N/mm<sup>2</sup>
- 3、抗弯强度：9-12Mpa
- 4、抗折强度：13.8Mpa（自然含湿状态）
- 5、抗折强度：9.4Mpa（浸水24hrs）
- 6、含水率：12%
- 7、透水性：不透水
- 8、防火等级：B1
- 9、抗弯破坏载重：87kgf
- 10、抗冲击性能：无龟裂、剥离、贯穿及裂开



规格尺寸/Specification:  
长\*宽 Length\*Width

厚度 Thickness

1220\*2440mm

8,10,12,16,20,25,30mm



## 应用范围

### Applications:

内外墙、吊顶、地面、商业、办公楼、酒店、展馆、会所、院校等。

Internal & external wall, ceiling, floor, business building, office building, hotel, pavilion, club, academy, etc.

# TOTAL<sup>®</sup> 手工木纹板

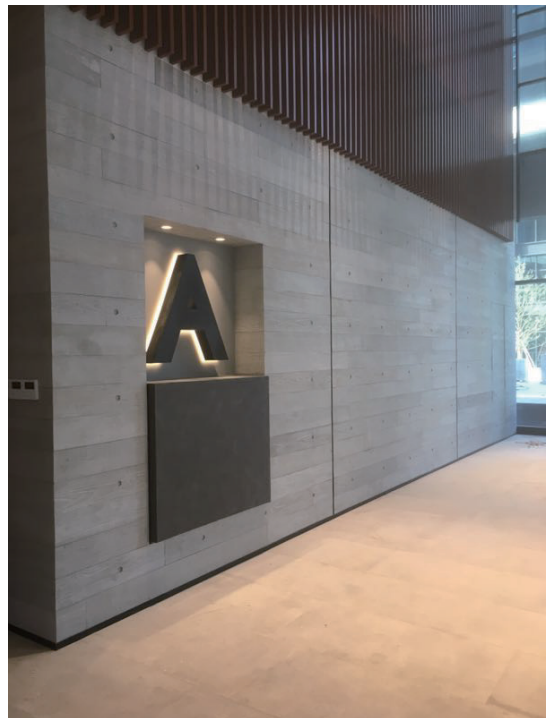
## - 手工木纹板 (流浆款/碳化木款)

最新推出的两款“TOTAL手工木纹板”，采用了自主研发的生态环保技术和创新材料，将传统工艺和技术创新结合，复古风格浓郁，在确保无甲醛的情况下将天然材料的木纹肌理感自然呈现，这是在考虑环境可持续发展的情况下，我们的用心之作。

Our brand-new 2 styles of products which is using the latest eco-friendly technology and innovative material, In ensuring of formaldehyde-free situation, we use natural material for exhibiting a wood texture, we keep trying to present you the perfect product in consideration of environmental sustainability.



A 114 / 流浆款



规格尺寸/Specification:  
长\*宽 Length\*Width

厚度  
Thickness

1200\*3030mm

3mm



# 辅料系列

## — 保护剂、结构胶



### FOREX<sup>®</sup> 强效型保护剂(1L) water repellents agent

FOREX<sup>®</sup> 水泥板保护剂：进口原物料调配，环保安全，无毒无味，强效防水，防污，抗腐蚀，能够保持水泥板原色，凸显水泥板纹路。  
主要成分：硅丙聚合物

Cement board protective agent: It made by imported raw materials, can be used widely, environmental safely, non-toxic, odorless, and also with character of water-proof, stain resistance, and it can show the cement board texture.

### 渗透型保护剂(2.6L)

Hydrophobization (water repellents agent)

主要成分：硅烷、硅氧烷、去离子水

产品特性：无甲醛，安全环保，小分子结构，可渗透水泥板表面，增强防水性，有效防止板材变形，减少由于冻融和风化产生的剥落，延长板材使用寿命，并且渗透效果不会改变板材外观。

使用方法：建议使用HVLP（低压高容）喷涂设备或专业雾气喷枪喷涂，确保基材喷涂前表面干燥清洁，喷涂后24小时不沾水，以达到最佳效果。

喷涂用量：12-15m<sup>2</sup>/L。

与世界五百强特种化工企业Evonik德国赢创（德固赛）合作产品，德国原浆进口。

Product Feature:

Applicable to mineral base materials, such as concrete materials, stone and so on. Solvent-free emulsion based on reactive organomodified siloxanes for the hydrophobizing impregnation of absorbent, mineral substrates with excellent beading properties. free of formaldehyde; Almost free of volatile organic compounds (VOC)

advise usage method: HVLP (high press spraying equipment), to ensure that the material is clean and dry, without water after sprayed 24 hours



Franklin胶水为美国原装进口；  
Selleys为澳大利亚原装进口。

### 结构胶(Franklin/Selleys)

ADHESIVE

成分：合成橡胶聚合物

施工指导：

1. 清洁粘接表面(无油污、灰尘)
2. 用刀切开胶嘴,用长钉捅破胶嘴内部之铝箔(戳5次左右)
3. 用胶枪挤出胶,离水泥板边距1.5cm打胶一圈,水泥板中部每隔10—15cm点状打胶,24—48小时最佳粘合。

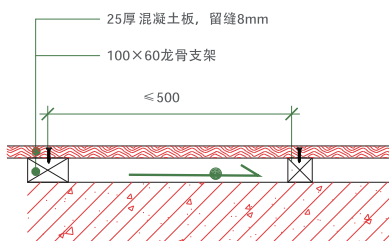
Ingredient: Synthetic Polymer

- 1, Clean the bonding surface (no oil, dust),
- 2, use knife to cut the plastic mouth, pierce the insider of the aluminum foil with spike (poke about 5 times)
- 3, use the cartridge gun to push out of the glue, around the cement board margins about 1.5cm, dot gluing every 10-15cm in the middle of the cement board, getting the best bond strength after 24-48 hours

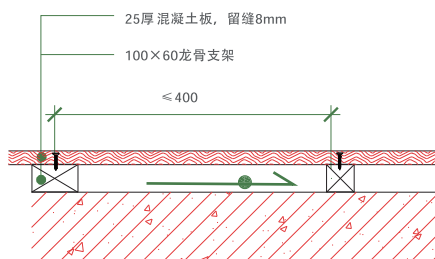
# 施工指导

## 施工节点

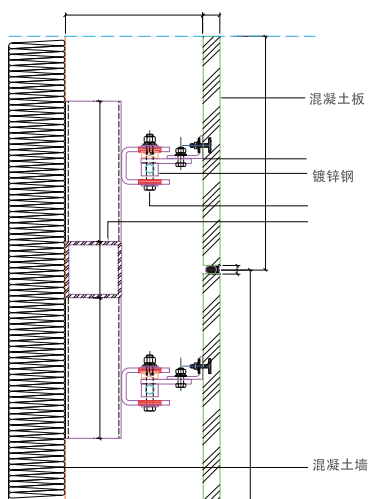
### Construction node graph



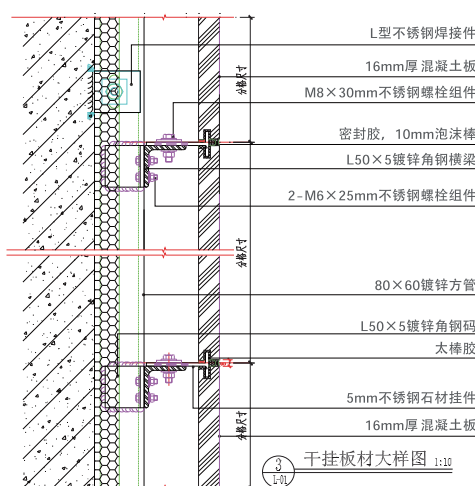
地面混凝土板铺设大样图 (室内)



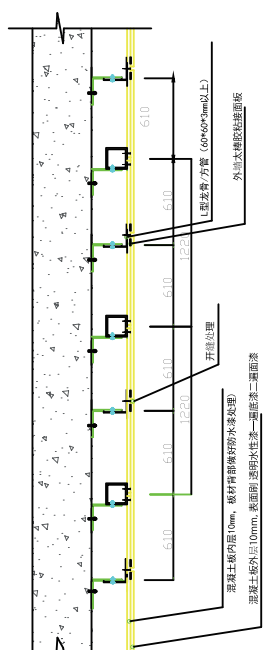
地面混凝土板铺设大样图 (室外)



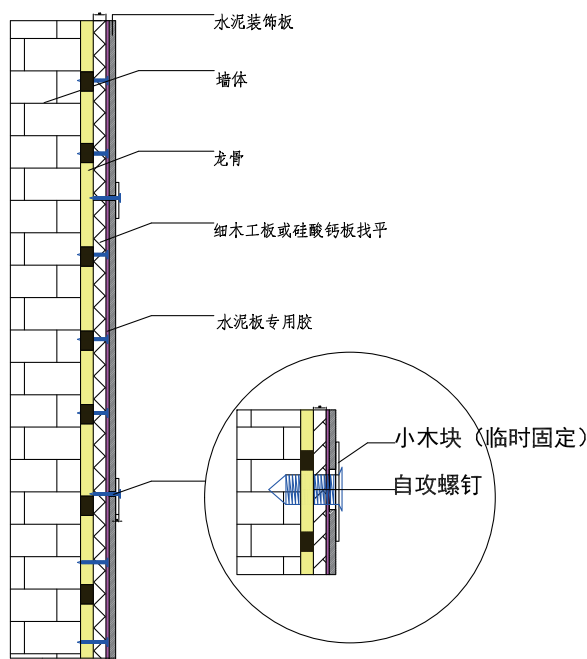
厚板背栓干挂



厚板开槽干挂



明缝节点示意图



室内墙面安装方法